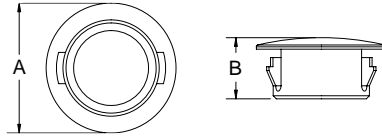




CONNECTOR CAPS & PLUGS

PGM / PLH Standard Locking Hole Plug



Item No.	Mounting Hole		Max Panel Thickness		OD A		Overall Height B		Bulk Pack Qty.
	In	mm	In	mm	In	mm			
PGM-4	0.189	4.8	0.067	1.7	0.236	6.0	0.205	5.2	1000
PGM-1	0.250	6.4	0.062	1.6	0.312	7.9	0.312	7.9	1000
PGM-6	0.252	6.4	0.067	1.7	0.299	7.6	0.221	5.6	1000
PGM-7	0.278	7.1	0.063	1.6	0.433	11.0	0.276	7.0	1000
PGM-8	0.307	7.8	0.063	1.6	0.375	9.5	0.236	6.0	1000
PGM-2	0.312	7.9	0.062	1.6	0.375	9.5	0.312	7.9	1000
PGM-33	0.375	9.5	0.125	3.2	0.468	11.9	0.406	6.4	1000
PGM-9	0.376	9.6	0.047	1.2	0.511	13.0	0.256	6.5	1000
PGM-10	0.386	9.8	0.055	1.4	0.511	13.0	0.236	6.0	1000
PGM-34	0.437	11.1	0.125	3.2	0.531	13.5	0.406	10.3	1000
PGM-3	0.468	11.9	0.062	1.6	0.531	13.5	0.250	6.4	1000
PGM-24	0.500	12.7	0.125	3.2	0.578	14.7	0.406	10.3	1000
PGM-5	0.500	12.7	0.062	1.6	0.562	14.3	0.250	6.4	1000
PGM-13	0.506	12.8	0.083	2.1	0.669	17.0	0.315	8.0	1000
PGM-11	0.531	13.5	0.062	1.6	0.593	15.1	0.250	6.4	500
PGM-26	0.562	14.3	0.125	3.2	0.656	16.7	0.406	10.3	200
PGM-27	0.625	15.9	0.125	3.2	0.718	18.2	0.406	10.3	200
PGM-12	0.625	15.9	0.062	1.6	0.718	18.2	0.250	6.4	500
PGM-16	0.628	16.0	0.079	2.0	0.787	20.0	0.315	8.0	500
PGM-28	0.687	17.5	0.125	3.2	0.781	19.8	0.406	10.3	200
PGM-19	0.746	19.0	0.125	3.2	0.925	23.5	0.413	10.5	500
PGM-14	0.750	19.1	0.062	1.6	0.843	21.4	0.250	6.4	500
PGM-15	0.781	19.8	0.062	1.6	0.890	22.6	0.250	6.4	500
PGM-22	0.864	22.0	0.118	3.0	1.024	26.0	0.378	9.6	500
PGM-17	0.875	22.2	0.062	1.6	0.968	24.6	0.250	6.5	500
PGM-29	0.875	22.2	0.125	3.2	1.125	28.6	0.453	11.5	200
PGM-25	1.004	25.5	0.125	3.2	1.102	28.0	0.500	12.7	200
PGM-32	1.097	27.9	0.125	3.2	1.218	30.9	0.465	11.8	200
PGM-30	1.203	30.6	0.125	3.2	1.339	34.0	0.512	13.0	200
PGM-18	1.250	31.8	0.125	3.2	1.375	34.9	0.465	11.8	200
PGM-20	1.375	35.0	0.125	3.2	1.500	38.1	0.465	11.8	200
PGM-31	1.500	38.1	0.125	3.2	1.671	42.4	0.465	11.8	200
PGM-21	1.750	44.5	0.125	3.2	1.906	48.4	0.465	11.8	100
PGM-23	2.000	50.8	0.125	3.2	2.170	55.1	0.470	11.9	100
PLH023A	2.500	63.5	0.250	6.4	2.775	70.5	0.750	19.1	500

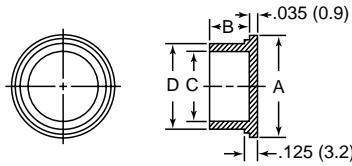
Specifications:

- Material: UL94V-2 Nylon 6/6
- Color: Black

Features:

- Each part fits multiple common sheet metal thicknesses
- Closes access sheet metal panel holes

FC CAP Circular Connector Cap



Item No.	MS90376 Dash No	To Cap Connector	A		B		C		D		Bulk Pack Qty.
			In	mm	In	mm	In	mm	In	mm	
FC708A	-8R	1/2	0.740	18.80	0.500	12.70	0.480	12.19	0.540	13.72	5000
FC710A	-10R	5/8	0.840	21.34	0.500	12.70	0.605	15.37	0.665	16.89	6000
FC712A	-12R	3/4	0.970	24.62	0.500	12.70	0.720	18.29	0.775	19.69	5500
FC714A	-14R	7/8	1.125	28.58	0.500	12.70	0.850	21.59	0.905	22.99	3000
FC716A	-16R	1	1.220	30.99	0.562	14.27	0.973	24.71	1.035	26.29	3300
FC718A	-18R	1-1/8	1.330	33.78	0.562	14.27	1.093	27.76	1.155	29.34	2500
FC719A	-19R	1-3/16	1.430	36.32	0.562	14.27	1.168	29.67	1.238	31.45	2300
FC720A	-20R	1-1/4	1.465	37.21	0.562	14.27	1.231	31.27	1.301	33.05	2200
FC722A	-22R	1-3/8	1.580	40.39	0.562	14.27	1.340	34.04	1.410	35.81	1800
FC723A	-23R	1-7/16	1.650	41.91	0.562	14.27	1.408	35.76	1.478	37.54	1200
FC724A	-24R	1-1/2	1.709	43.41	0.562	14.27	1.463	37.16	1.533	38.94	1500
FC726A	-26R	1-5/8	1.810	45.97	0.562	14.27	1.590	40.39	1.660	42.16	1250
FC728A	-28R	1-3/4	1.950	49.53	0.562	14.27	1.715	43.56	1.790	45.47	1000
FC732A	-32R	2	2.220	56.39	0.562	14.27	1.965	49.91	2.040	51.82	900
FC736A	-36R	2-1/4	2.435	61.85	0.600	15.24	2.215	56.26	2.290	58.17	700
FC740A	-40R	2-1/2	2.660	67.56	0.600	15.24	2.440	61.98	2.530	64.26	550
FC744A	-44R	2-3/4	2.960	75.18	0.600	15.24	2.720	69.09	2.812	71.42	450

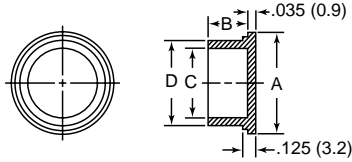
Specifications:

- Material: Low-Density Polyethylene
- Color: Red

Features:

- Designed for easy assembly and removal either with automated equipment or by hand
- Typically used to protect electrical connectors per Mil Spec 90376

FC PLUG Circular Connector Plug



Item No.	MS90376 Dash No	To Cap Connector	A		B		C		D		Bulk Pack Qty.
			In	mm	In	mm	In	mm	In	mm	
FC707A	-8Y	1/2-18	0.670	17.02	0.625	15.88	0.413	10.49	0.483	12.27	10000
FC709B	-10Y	5/8-24	0.750	19.05	0.625	15.88	0.530	13.46	0.595	15.11	8000
FC711B	-12Y	3/4-20	0.860	21.84	0.625	15.88	0.655	16.64	0.715	18.16	5500
FC713B	-14Y	7/8-20	1.031	26.19	0.625	15.88	0.785	19.94	0.845	21.46	4000
FC715B	-16Y	1-20	1.125	28.58	0.625	15.88	0.893	22.68	0.963	24.46	3000
FC717C	-18Y	1-1/8-18	1.250	31.75	0.625	15.88	1.028	26.11	1.088	27.64	3000
FC719A	-20Y	1-1/4-18	1.406	35.71	0.625	15.88	1.150	29.21	1.215	30.86	2000
FC721A	-22Y	1-3/8-18	1.500	38.10	0.625	15.88	1.270	32.26	1.340	34.04	1500
FC723A	-24Y	1-1/2-18	1.640	41.66	0.625	15.88	1.390	35.31	1.460	37.08	1400
FC725B	-25Y	1-5/8-18	1.810	45.97	0.625	15.88	1.540	39.12	1.580	40.13	1300
FC727C	-28Y	1-3/4-18	1.875	47.63	0.625	15.88	1.648	41.86	1.718	43.64	1200
FC731B	-32Y	2-18	2.125	53.98	0.625	15.88	1.890	48.01	1.970	50.04	900
FC735A	-36Y	2-1/4-16	2.340	59.44	0.625	15.88	2.140	54.36	2.210	56.13	800

Specifications:

- Material: Low-Density Polyethylene
- Color: Yellow

Features:

- Designed for easy assembly and removal either with automated equipment or by hand
- Typically used to protect electrical connectors per Mil Spec 90376